

FREMONT COUNTY HISTORICAL SOCIETY

NOVEMBER 15, 2020 VOLUME 18, ISSUE 6

EDITOR: CAROL MCNEW READER: MARGARET STORM

WEBSITE: www.fremontheritage.com Facebook page: Fremont County Historical Society - Colorado

**YOU ARE INVITED TO THE PROGRAM ON NOVEMBER 15, 2020
SHEPHERD OF THE HILLS LUTHERAN CHURCH
801 SHERIDAN AVE., CAÑON CITY, CO 81212
2:00 P.M. PUBLIC WELCOME**

- Indoor group gatherings must be limited to no more than 50 people not including staff and/or volunteers
Come one - come all - this is our usual crowd number. We hope to see you!



LARRY GREEN

Native Coloradoan, born in Colorado Springs, raised in Manitou Springs.
Married to Pueblo native Margaret A (Pearson) Green

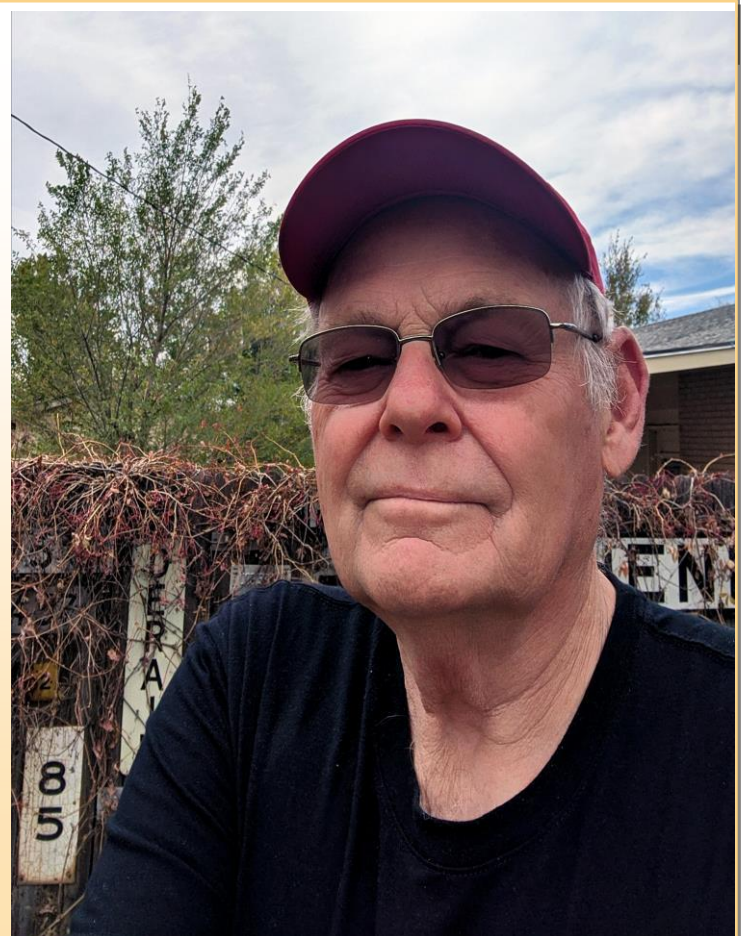
1965 Graduate of St. Mary's High School, Colorado Springs, Colorado

1970 Graduate of Southern Colorado State College, BS in Broad Area Social Science, dual major History-Anthropology (Historic Archaeology) minor in Geology, also earned Secondary Teacher Certification in the Social Sciences.

Two seasons of field experience in Historic Archaeology working with Dr. William G. Buckles of Southern Colorado State College.
First season: 1975 at Ten Mile Canyon, between Frisco and Copper Mountain, Colorado
Archaeological clearance for the Colorado Department of Highways Interstate 70 route.
Work included documenting the original Denver & Rio Grande Blue River Branch and the Denver, South Park and Pacific High Line rights of way.

Second season: 1976 was with the U. S. Bureau of Reclamation's Mount Elbert Fore Bay Project. Served as project photographer and oral historian. Focus of the work was to clear the right of way for the Mount Elbert Conduit between Turquoise Lake and the Fore Bay. Included prehistoric and historic aspects.

**PAGE 1: LARRY GREEN presents the story of Echo and her sisters.
PAGE 2; Synopsis of the program
PAGE 3: Business notices and events
PAGE 4: More about Larry Green; FCHS
PAGE 5: Vintage Drawings of the Railroad trackage
PAGE 6: OUR ADVERTISERS WHO HELP SEND THIS NEWSLETTER TO ALL OUR MEMBERS
NO REFRESHMENTS WILL BE SERVED**



CONTINUED FROM PAGE 1:



LARRY GREEN'S PRESENTATION OF "ECHO"

The focus of my presentation will be a part of the Royal Gorge War that is usually side stepped, that being the narrow-gauge operations of the Atchison Topeka & Santa Fe Railroad. I will include a basic background on the War, the story of the narrow-gauge locomotives and rolling stock purchased by the Santa Fe and the story of the #1 Echo, which stretches from New Hampshire to Kansas and finally to Colorado. I will describe the various excursions the ATSF operated through the gorge until the line was sold to the Denver and Rio Grande. The story has some modern components as the image of Echo that Eve Nagode was allowed to scan helped to solve one of the long-standing mysteries about it.

Continued on Page 4

WHAT IS FCHS: The Society was formed in 1971 by 200 charter members. The mission was to identify, preserve and educate people about the historic treasures of Fremont County. The society was instrumental in providing the Local History Center in the Cañon City Public Library with the resource materials collected over the years by the members of the Society.

The collection of historical materials which are now housed in the Royal Gorge Regional Museum and History Center at 612 Royal Gorge Boulevard are the result of preservation efforts by the Historical Society over the years. There are many opportunities for families to find their ethnic history, addresses of former members of their family and the resting place of many of the pioneers.

We urge you to also find the old papers, letters, and other artifacts that may be of value to the community as a whole about your family and history here. Join the Historical Society to further the aims, or donate to this organization to help preserve our history.

Membership: Individual \$15.00 Due on January 1st, of each year
Life Membership is \$150 Family: \$20.00 Advertisement: \$40.

FLORENCE HISTORICAL ARCHIVES, INC. We encourage you to attend the ongoing programs at the Bell Tower in Florence presented by the FHAI, on the subject of 19th Amendment and Women's Suffrage. This story has a stunning number of events which most people have never heard, and the success of the movement was proven when the amendment which gave the right to vote without regard to gender was enacted in 1919. Next presentation: November 8, 2020 - Sunday - 3:00 p.m. Cost is \$5.00 for non-members and \$4.00 for members.

ROYAL GORGE REGIONAL MUSEUM AND HISTORY CENTER
The Museum and History Center are open for research, and for tours with a minimum of occupants in the building at this time. The various exhibits throughout the building are directly connected to the Fremont County and Colorado past. There is a display honoring veterans and telling the story of a country at war and the participants of each branch. The new Amick gallery exhibit is of vintage clothing and the explanation of the various styles that have changed through the years from 1865 through the 1980's. Visit them online or at 612 Royal Gorge Boulevard Wed. through Sat. 10 a.m. to 4 p.m.
www.museum.canoncity.org
Email: historycenter@canoncity.org

MEMBERSHIP INFORMATION

Thank you to all the new members who have joined this year - we are glad you have joined us. Dues cover Dec. 31, 2020 to Jan. 1, 2022.

- Individual \$15.00
- Family \$20.00
- Group \$25.00
- Lifetime \$150.00

Fremont County Historical Society, P.O. Box 965, Cañon City, CO 81215
Fremontheritage.com

FCHS BOARD OF TRUSTEES:

- | | |
|------------------------------------|--------------------|
| Margaret Storm | Sue Buchanan |
| Beverly Harris | Carol McNew |
| Larry Linscott | Pat Nelson, Treas. |
| Gloria Stultz | Kathy Uhland |
| Phil Nusbaum | |
| P.O. Box 965, Cañon City, CO 81215 | |

The City of Cañon City is pleased to print the Fremont County Historical Society Newsletter as a contribution to the Society. Thanks for all you do for Fremont County History.



FLORENCE HISTORICAL ARCHIVE, INC.
A GOOD HOME FOR YOUR LIBRARY
WELCOMING 1 PIECE OR THE FULL SHELF
READERS & VOLUNTEERS NEEDED.
600 W 3RD ST. FLORENCE, CO 719-372-1648

Continued from page 1:

More information about our presenter: Larry Green

1980 Graduate of The Colorado College with a MA in Southwestern Studies. Thesis topic "Railroad Place Names related to the Atchison Topeka & Santa Fe Railroad in Colorado 1980"

1971-2005 Employed by the Fountain Fort Carson School District #8 as a Middle School Social Studies Teacher on Fort Carson at Carson Middle School.

2007 Completed a survey of the Denver South Park and Pacific Ohio Creek Pass route, including the Ohio Creek Palisades, northwest of Gunnison. Survey included documenting the Mt. Carbon Anthracite Coal Mine and Coke Ovens Complex above Baldwin. Colorado Survey, mapping data and drawings were shared with the United States Forest Service in conjunction with the Mt. Edmonds Project.

2015 Recipient of Historic Preservation Award by the Pueblo County Historical Society

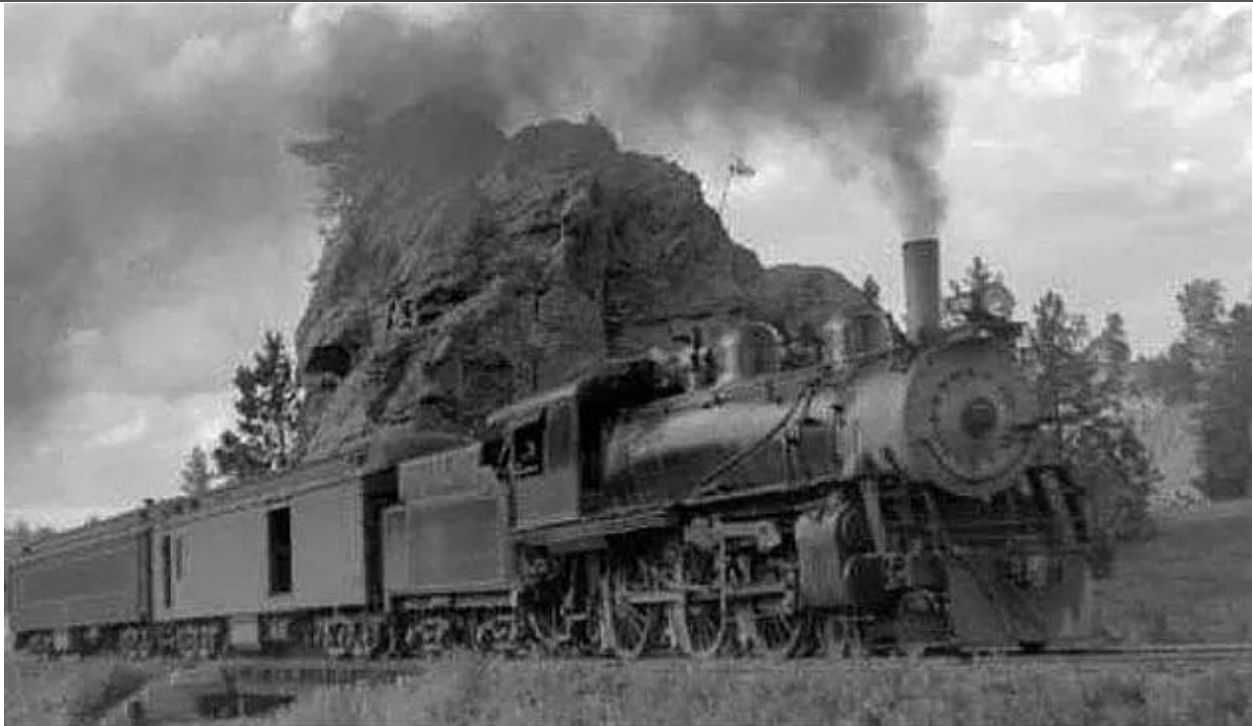
2019 Presenter for the Santa Fe Modeling and Historic Society National Convention

2010-2020 Volunteer Historic Researcher for the Pueblo County Historic Society

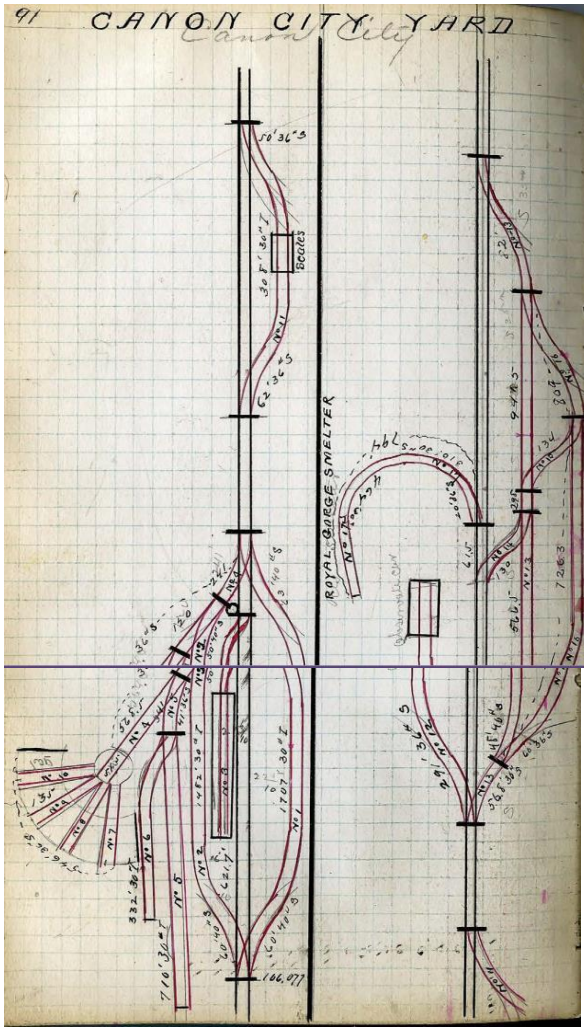
Some Published Articles:

Editorial response to "Pueblo, a Santa Fe Town" The Santa Fe Railway Historical and Modeling Society publication "The Warbonnet"

3 Articles detailing "Ohio Pass" for the Denver South Park and Pacific Historical Society



Spur line to Westcliffe up the Texas Creek line, Narrow Gauge. Flooded out and removed.



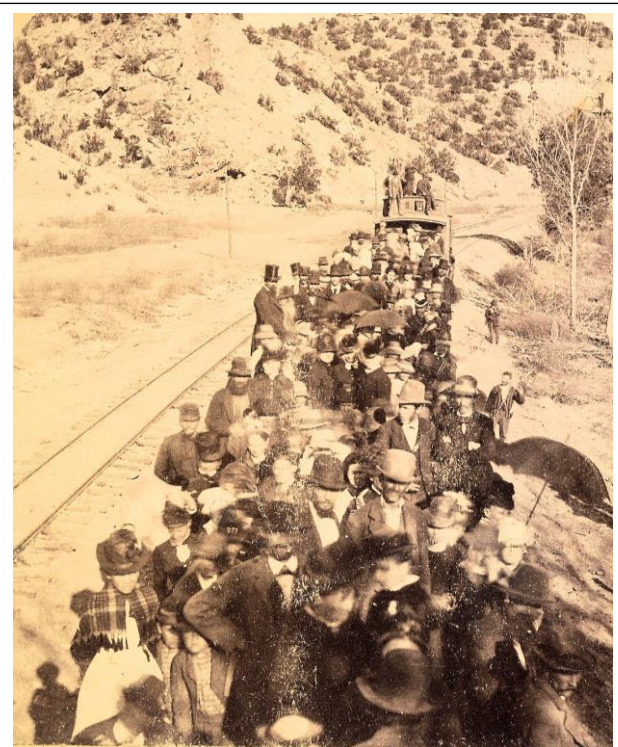
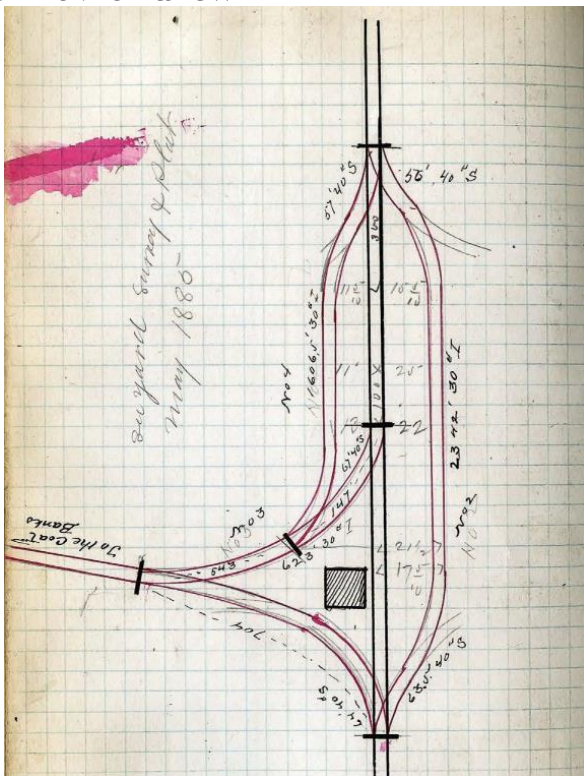
SCANNED COPIES OF RAILROAD ENGINEER NOTES ON THE D&RGW RR by engineers in the late 1800's. Scanned by Craig Thomas, and preserved for posterity the information about the original trackage and buildings which were built alongside.

The various drawings were made from Pueblo to Salida and further. The details of the drawings are interesting and informative about roads and bridges that existed at the time.

The drawings are in a book which was copied in its entirety, and furnished to the Fremont County Historical Society by Larry Green. Notes about what is contained in the copy of the book explained the numbering, pages and extent of copies made. I quote /

- 11. Unnumbered page prior to end papers is a very rough pencil sketch for Gorge Siding
- 12. End paper includes very rough pencil sketch of spur to Royal Gorge Smelter
- 13. Now that this volume has been scanned, it has been semi-permanently sealed in an acid-free archival-quality protective sleeve, so as to prevent damage.

FLORENCE AND SPUR TO THE COAL BANKS - CRAIG THOMAS D&RGW RR



1 Excursion train into the Gorge 1886 -from Linda Nelson Zupan collection, owned by FCHS

NEW and USED TIRES
 CUSTOM TIRES and WHEELS
 MICHELIN - BF GOODRICH - GOODYEAR - MULTI-MILE

JIM'S TIRE SERVICE, INC.
J. D. MEYERS

1005 South 9th Street
 P.O. Box 1005
 Cañon City, CO 81215
 275-1886 or 275-1576



Contractors Homeowners

CANON RENTAL

John & Sandy Howard
 Owners

401 South 9th Street
 Canon City, CO 81212

Tel: (719) 275-0615
 Fax: (719) 275-1355

ROYAL REGIONAL MUSEUM
GORGE & HISTORY CENTER

612 Royal Gorge Blvd.
 Cañon City, Colorado

Open 10am - 4pm
 Wed. - Sat.

museum.canoncity.org
 719-269-9036

Paul and Karen Austin/Owners

2625 E. Main Cañon City, co 81212

719-275-5055



GOLDEN AGE COUNCIL, INC.
 Cañon City Senior Activity Center
 728 Main Street

GAC NUTRITION PROGRAM
 Lunch served @
 noon Monday-Friday
 Call 345 3064 prior
 to 9:30 a.m. for
 reservations
 \$3.00 per person
 age 60 & up
 \$11.00 under age
 60.



GAC SOCIAL ACTIVITIES
 Cards, Bingo, Educational Seminars,
 Exercise Classes, Line Dancing
 Evening entertainment, Casino Trips
 Special Events
FREMONT TRANSIT CALL 275 5200

Dee Stubbs

designs @MASTER PRINTERS 719-275-6482
 OR 719-275-8608
 308 Main St., Cañon City, Colorado

10AM-6PM MON-FRI 10AM-4PM SAT.

SUNDAYS BY APPOINTMENT ONLY